



**29<sup>th</sup> Annual NY ReLeaf Conference**  
**July 21-23, 2022**  
**Jefferson Community College**  
**Watertown NY**

*Trees Bring Us Together!*



# Welcome to the 2022 ReLeaf Conference!

## “Trees Bring Us Together”

We are excited for everyone to be together in person again. Our theme is “Trees Bring Us Together.” Partnerships are critically important to successful projects in urban forestry, and we’ll hear from speakers on how to find and build strong inclusive partnerships in your community. Networking time provides attendees the opportunity to exchange ideas with leading urban forestry specialists and professionals.

## Continuing Education Credits

Continuing education credits for DEC pesticide, Society of American Foresters (SAF), International Society of Arboriculture (ISA), and Certified Nursery & Landscape Professional (CNLP) will be available for applicable presentations. Unfortunately, Landscape Architect credits are not available this year. Moderators will have continuing education information and sign-in sheets at each session. Please note all SAF Credits are Category 1. Certificates of attendance are available for each session with the session moderators, or for the entire conference after the weekend by emailing [urbanforestry@dec.ny.gov](mailto:urbanforestry@dec.ny.gov)

## COVID-19 Procedures

Masks are not required by JCC when on campus. Masks are strongly encouraged indoors when social distancing cannot be maintained, particularly in lecture halls and classrooms. Sanitizer and surgical masks are available at the registration table.

## On Campus Parking

Parking at JCC is free for attendees. Day attendees and vendors are recommended to park in lots D or C, near the Jules Center. Overnight guests can park at East Hall in lot F. Please see the accompanying campus map.

## Nondiscrimination Statement

In accordance with Federal law and U.S. Department of Agriculture (USDA) civil rights regulations and policies, this institution is prohibited from discriminating on the basis of race, color, national origin, sex, age, disability, and reprisal or retaliation for prior civil rights activity. (Not all prohibited bases apply to all programs.)

Persons with disabilities who require alternative means of communication for program information (e.g., Braille, large print, audiotape, American Sign Language, etc.) should contact the responsible State or local Agency that administers the program or USDA’s TARGET Center at (202) 720-2600 (voice and TTY) or contact USDA through the Federal Relay Service at (800) 877-8339. Additionally, program information is also available in languages other than English.

This institution is an equal opportunity provider.

# Thank You to Our Conference Sponsors

## Crown



## Trunk

SiteOne Landscape Supply

We Find Plants

## Roots

Tree Diaper

Schichtel's Nursery

PlanIt Geo

# 2022 ReLeaf Conference Agenda at a Glance

Please see the presentation details section for more information on each session

## Thursday, July 21

1:00 – 3:00 p.m.	Sponsor and Vendor Exhibit set up ( <i>Commons in Jules Center Commons</i> )
3:00 – 5:30 p.m.	Attendee check in ( <i>in the Commons in Jules Center</i> )
1:00 – 3:30 p.m.	NYS Urban Forestry Council Board Meeting ( <i>in Jules Center 6-105</i> )
4:00 – 5:30 p.m.	Pre-conference activity – tour or movie
6:00 – 7:00 p.m.	NYS Urban Forestry Council Members Meeting ( <i>in Jules Center 6-002</i> )
7:00 – 9:00 p.m.	Council Members Reception ( <i>in the Commons in Jules Center</i> )

## Friday, July 22 Morning

7:00 – 8:30 a.m.	Breakfast for overnight guests – ( <i>East Hall Hub Area</i> )
7:30 a.m.	Attendee check in opens – ( <i>the Commons in Jules Center</i> )
8:30 a.m.	<b>Welcome to ReLeaf 2022!</b> DEC Urban Forestry and NYS UFC opening remarks ( <i>in McVean Student Center Theatre – Room 4-111</i> )
8:45 – 9:15 a.m.	<b>Host City Plenary</b> Mike Demarco, City Planner, City of Watertown, Tree Watertown member, NYSUFC Board member ( <i>in McVean Student Center Theatre – Room 4-111</i> )
9:15 – 10:00 a.m.	<b>“Optimizing urban forests for climate and public health”</b> (Keynote) Ian Leahy, Vice President of Urban Forestry, American Forests ( <i>in McVean Student Center Theatre – Room 4-111</i> )
10:00 – 10:15 a.m.	<b>Sponsor thank you and exhibitor introduction</b>
10:15 – 10:55 a.m.	<b>Break</b> – please visit our exhibitors in the Commons in Jules Center
10:55 – 11:25 a.m.	<b>Lightning round.</b> This event features short presentations on community projects and programs.
11:30 a.m. – 12:30 p.m.	Concurrent workshop sessions <b><u>Session A (<i>in Jules center 6-002</i>)</u></b> “The giving tree was right: all the ways you benefit from urban trees” <b><u>Session B (<i>in Jules Center 6-105</i>)</u></b> “Organizing successful volunteer tree projects” <b><u>Session C (<i>in Jules Center 6-110</i>)</u></b> “Biophilic school sites for Syracuse NY”
12:30 p.m.	<b>Lunch</b> in Jules Center Dining hall and Attendee check in closes

## Friday July 22 Afternoon

1:30 – 2:00 p.m.	Board buses for local tours or break if remaining for on campus workshop. Meet buses in front of Jules Center on Canoneer Loop. <b>Buses leave promptly at 2 p.m.</b>
2:00 – 4:30 p.m.	Concurrent local tours and on-site workshop. Tours arrive at destinations at 2:15 p.m. and leave sites at 4:15 p.m.

Tour 1	<b>Thompson Park Tour</b>
Tour 2	<b>Downtown Watertown Arboretum and History Tour</b>
Session F	2:00 p.m. <i>Jules Center 6-002</i>  <b>“Tree pest impacts on Community Forest health”</b>  3:00 p.m. Meet in Jules Center Commons  <b>“It’s all about the trees – and more: Building a campus culture for sustainability”</b>
4:30 – 5:00 p.m.	Return from tours, break, and meet buses for transport to picnic
5:00 – 8:00 p.m.	Travel to Thompson Park for picnic dinner
9:00 p.m.	Camp fire for overnight guests, behind East Hall

## Saturday, July 23

7:30 – 8:30 a.m.	Breakfast for overnight guests ( <i>East Hall Hub</i> )
8:00 a.m.	Overnight guest check out opens ( <i>Jules Center Commons</i> )
8:30 – 9:45 a.m.	Concurrent workshops  <b><u>Session G (in Jules Center 6-105)</u></b> 8:30 -9:15 a.m. <b>“The challenges and opportunities to increase tree canopy in low canopy neighborhoods”</b> 9:15 -9:45 a.m. <b>Syracuse Food Forest project.</b>  <b><u>Session H (in McVean Student Center 4-111)</u></b> 8:30 -9:15 a.m. <b>“Responding and adapting to the ecological impacts of EAB in the Akwesasne Mohawk Territory”</b> 9:15 -9:45 a.m. <b>“Black ash basketry, a link to the past”</b>
9:45. – 10:00 a.m.	<b>Break</b> , please visit our exhibitors in the Commons in Jules Center
10:00 – 11:00 a.m.	Concurrent workshops  <b><u>Session I (in McVean Student Center 4-111)</u></b> <b>“Enhancing urban forest resiliency”</b>  <b><u>Session J (in Jules Center 6-105)</u></b> <b>“Preserving and improving City of Utica's Olmstead designed parks through partnership with Central New York Conservancy”</b>
11:15 a.m. – 12:15 p.m.	<b>“Status of NYS municipal urban forest management program – Preliminary findings” (in McVean Student Center 4-111)</b>  Rebecca Hargrave, Associate Professor of Environmental Science and Arboriculture at SUNY Morrisville and Ph.D. student in Forest Resources and Arboriculture at University of Massachusetts Amherst
12:15 p.m.	<b>Grab and Go Lunch</b> available in the Jules Center Commons
1:00 p.m.	Conference ends – Please don’t forget to fill out your evaluation.  THANK YOU and we’ll see you next year on Long Island!

# Presentation Details

## Thursday July 21

**3:00 – 5:30 p.m.** *Jules Center Commons*

Attendee check in - Pick up your conference brochure, conference gift, and check in for dorm rooms

**4:00 – 5:30 p.m.**

Pre-conference activity

Meet in the Jules Center Commons for a walking tour of Bicentennial Park. This walk is on flat surfaces and is about 1.5 miles round trip (0.75 each way) from campus through the Fairgrounds to Bicentennial Park. We recommend comfortable shoes and bringing water with you.

Rain event: Showing of *Uninvited* in the East Hall Hub area

## Friday July 22

**7:30 a.m.** *Jules Center Commons*

Attendee check in opens - Pick up your conference brochure, conference gift, and check in for dorm rooms

**8:30 a.m.** *McVean Student Center Theatre – Room 4-111*

**Welcome to ReLeaf 2022!** DEC Urban Forestry and NYS UFC opening remarks from Urban Forestry Program Coordinator Gloria Van Duyne and NYS Urban Forestry Council President Steve Harris

### Plenary and Keynote

**8:45 – 9:15 a.m.** *McVean Student Center Theatre – Room 4-111*

**Host City Plenary**

**Mike Demarco**, *City Planner, City of Watertown, Tree Watertown member, NYSUFC Board member*

Watertown's urban forestry program is partnership driven. From planting, education & outreach, to maintenance - every aspect of Watertown's urban forestry programming is elevated by partnerships and/or volunteerism. Come learn about some of the ways that partnerships might be able to bring your community's urban forestry efforts to a higher level.

Credits available: Combined with Keynote below, must attend both for credit

**9:15 – 10:00 a.m.** *McVean Student Center Theatre – Room 4-111*

**"Optimizing urban forests for climate and public health"**

**Ian Leahy**, *Vice President of Urban Forestry, American Forests*

Urban and community forestry is having a moment. Our work has finally broken through into the spotlight as a life-saving infrastructure on the frontlines of the most pressing climate and public health issues of our time. But now we must deliver. This keynote presentation will explore where bipartisan support for our work stands, what opportunities lie ahead and introduce a suite of free tools, guides, and finance mechanisms any

municipality can use to make sure its urban forest is generating the most revenue, protecting the most lives, storing the most carbon and engaging stakeholders most effectively.

Plenary and Keynote Credits available: SAF: 0.5 (each); ISA Certified arborist, Municipal specialist, and BCMA – Management: 1.25

## Lightning Round

**10:55 – 11:25 a.m.                      *McVean Student Center Theatre – Room 4-111***

This event features short presentations on community projects and programs.

Saranac Lake Village Improvement Society - **Randall Swanson**, *Village Improvement Society of Saranac Lake*

This presentation will provide an overview of the mission and activities of the Village Improvement Society of Saranac Lake which was established in 1910 to help implement a park plan developed by the Olmsted Brothers firm. This volunteer-run organization now owns and maintains 6 parks within the village of Saranac Lake, provides hanging flower baskets on the streets and plants flowers in other garden spaces around town. (Website at [www.saranaclakevis.org](http://www.saranaclakevis.org))

Urban Tree Canopy Project - **Justin Murphy**, *Journalist for Democrat and Chronicle*

This unique urban tree canopy project in Rochester brought together journalism, community organizations and local academics to share and build upon information related to the tree canopy in Rochester as well as solutions for improving equity.

National Grid Project C and Adopt a Park - **Kym Spaeth**, *Senior Program Manager – Project C, National Grid*

An overview of National Grid's Adopt a Park program. The presentation will include goals of the program, expected outcomes and value to the communities we serve.

Credits available: SAF: 0.5; ISA Certified arborist, Municipal specialist, and BCMA – Management: 0.5

## Concurrent Sessions

**11:30 a.m. – 12:30 p.m.                      *Session A (in Jules Center 6-002)***

**“The giving tree was right: all the ways you benefit from urban trees”** **Dr. Donald A. Rakow**, *Associate Professor in the School of Integrative Plant Science Horticulture Section at Cornell University*

Trees give so much to us, both in obvious ways such as shade and beauty, and in lesser-known ways that are just being revealed. In this presentation, Prof. Rakow will describe the latest scientific evidence on ways that we benefit from trees, whether they are growing in a forest or along a street. He will also discuss approaches to encouraging people to spend more time amongst the trees.

Credits available: SAF: 1.0; ISA Certified arborist, Municipal specialist, and BCMA – Science: 1.0

**11:30 a.m. – 12:30 p.m.                      *Session B (in Jules Center 6-105)***

**“Organizing successful volunteer tree projects”** **Betsy Henry**, *ReTree Schenectady* and **Phillip Sprague** *from Watertown Rotary*

Betsy will talk about the benefits and challenges of volunteer tree projects and will share lessons learned and tips for success. She will also discuss the types of projects where it makes sense to rely on volunteers and

projects where contractors or municipal staff can provide greater efficiency. Participants will be encouraged to share their experience and advice.

Credits available: SAF: 1.0; ISA Certified arborist, Municipal specialist, and BCMA – Management: 1.0

**11:30 a.m. – 12:30 p.m.      Session C (in Jules Center 6-110)**

**“Biophilic school sites for Syracuse NY” Emanuel Carter**, MRP, Associate Professor, Director, SUNY Center for UNESCO Biosphere Reserve Studies Department of Landscape Architecture, SUNY College of Environmental Science & Forestry and **Justin Kwiatkowski**, MS, Landscape Designer, EDR Companies

Justin and Professor Carter will present two projects: a graduate landscape architecture design studio and a Master of Science thesis that are being used to convince the Mayor of Syracuse and the Syracuse City School District to begin a program of establishing biophilic school sites in order to: (1) expand the City’s urban forest; (2) contribute to better educational outcomes in the District; (3) contribute to the physical, mental and emotional well-being of students, faculty and staff in the District, and; (4) contribute to better neighborhood ambience and desirability.

Credits available: SAF: 1.0; ISA Certified arborist, Municipal specialist, and BCMA – Management: 1.0

## Afternoon Tours

**2:00 – 4:30 p.m.      Thompson Park Tour**

**Ken Mix**, City Manager, City of Watertown

Attendees will take a walking tour of John C. Thompson Park. The Park was designed by Olmsted Brothers, Landscape Architects. Ken will talk about what was, what could have been, what is, and what could be within the park, with emphasis on the trees and shrubs.

Credits available: SAF: 2.0; ISA Certified arborist, Municipal specialist, and BCMA – Management: 2.0

**2:00 – 4:30 p.m.      Downtown Watertown Arboretum and History Tour**

**Michael A. Lumbis**, Planning and Community Development Director, City of Watertown and **Dr. Jason White**, MD FAFFP, Chairman of Advantage Watertown, and Tree Watertown Member

This tour will begin on the grounds of the Roswell P. Flower Memorial Library located on Washington Street in Downtown Watertown. The library is one of the most iconic buildings in historic downtown and is at the center of the Downtown Arboretum. The arboretum was developed by Tree Watertown, the City’s Street Tree Advisory Board, in 2001 to show residents and visitors the unique variety of tree species that are in the downtown area. Over 35 different varieties and species of trees line the streets and are nestled among numerous historic buildings in this small two-block area. During the tour, participants will learn about the history of many of the buildings and trees as well as the many people and partnerships that have been forged over the years to make the arboretum happen.

Credits available: SAF: 2.0; ISA Certified arborist, Municipal specialist, and BCMA – Management: 2.0



**2:00 – 4:30 p.m. Session F – On Campus program followed by campus tour**

2:00 p.m.

*Jules Center 6-002***“Tree pest impacts on community forest health”**

**Andréa Nieves**, Education and Outreach Coordinator, and **Rob Cole**, Forester, Bureau of Invasive Species and Ecosystem Health

Join DEC Forester Rob Cole and Invasive Species Outreach Coordinator Andréa Nieves for information on the invasive pests and pathogens that most affect NYS communities. Learn about the biology of these pests, how they spread, and how to manage for them in your community. We'll also be talking about the importance of community outreach, how to report invasives, and how to get involved with your Partnership in Regional Invasive Species Management (PRISM).

Credits available: ISA Certified arborist, Municipal specialist, and BCMA – Practice: 1.0; DEC Pesticide credits category 2 and 3a: 0.75

3:00 p.m.

*Meet in Jules Center Commons***“It’s all about the trees – and more: Building a campus culture for sustainability.”**

**Bruce Alexander**, Director of Administrative Services for JCC, and **Michael D. Altieri**, PE, Principle/Civil Engineer, BCA Architects and Engineers

This campus tour will look at projects done by the school to build awareness of sustainability issues and how the work has had a long-term positive effect on the school’s Tree Campus initiatives. The JCC EverGREEN committee has been the prime mover for these efforts by taking a multi-faceted approach in educating students, staff, and visitors about the many environmental issues that face the college and community.

Credits available: ISA Certified arborist, Municipal specialist, and BCMA – Management: 1.0

## Saturday July 23

8:00 a.m.

*Jules Center Commons*

Dorm check out opens, please return your dorm room keys

### Concurrent Sessions

8:30 – 9:45 a.m.

*Session G (in Jules Center 6-105)***8:30 -9:15 a.m. “The challenges and opportunities to increase tree canopy in low canopy neighborhoods”**

**Cimone Jordan**, Director of Housing and Neighborhood Planning, City of Syracuse and **Stephen Harris**, City Arborist, Syracuse Parks Department

Steve and Cimone will discuss the city’s collaborative effort across departments to increase tree cover in neighborhoods using an array of strategies with a focus on using vacant lots to increase tree canopy in our lowest canopy communities.

**9:15 -9:45 a.m. “Syracuse food forest project” Kat Korba**, Garden Cycle

The Syracuse Urban Food Forest Project (SUFFP) has designed a model food forest corridor that integrates ongoing green infrastructure plantings, and ecosystem types along a three-mile corridor in Syracuse, NY.

SUFFP engages the community with community planting events, educational community ID walks and engages the neighborhood and business community linked to efforts to improve environmental quality and financial opportunities for local residents.

Credits available: SAF: 0.5; ISA Certified arborist, Municipal specialist, and BCMA – Management: 1.25

**8:30 – 9:45 a.m.**

**Session H (*McVean Student Center Theatre – Room 4-111*)**

**“Responding and Adapting to the Ecological Impacts of EAB in the Akwesasne Mohawk Territory” Normand Genier**, Tribal Forester, Saint Regis Mohawk Tribe

Methods and techniques currently being utilized by the Saint Regis Mohawk Tribe to slow the spread of the EAB in an effort to minimize the impacts on the forest landscape, while focusing primarily on protecting Black ash, a culturally-important tree species for the Mohawk Community of Akwesasne.

**“Black ash basketry, a link to the past” Angello Johnson**, Land Resource Technician, Saint Regis Mohawk Tribe

The presentation will begin with a Native American prayer, the “ohenton kariwatehkwa” words before all else, and a brief translation and how it ties us to the natural world. Then Angello will continue with a brief history of basket making in haudenosaunee culture. He will discuss the various traditional uses of black ash in day to day life, and the importance of preserving traditionally significant species for cultural identity.

Credits available: SAF: 0.5; ISA Certified arborist, Municipal specialist, and BCMA – Management: 1.25

## Concurrent Sessions

**10:00 – 11:00 a.m.**

**Session I (*McVean Student Center Theatre – Room 4-111*)**

**“Enhancing Urban Forest Resiliency” Megan Pistolese-Shaw**, Education and Outreach Coordinator, and **Robert Smith**, Terrestrial Restoration Resilience Coordinator, both with SLELO PRISM

Healthy trees play an important role in urban settings. They provide shade in the summer and act as a wind barrier in colder seasons. They reduce pollution from urban runoff and beautify our streets and yards. Climate change and invasive species threaten the health of the street trees that make up our parks and urban forests. The St. Lawrence Eastern Lake Ontario Partnership for Regional Invasive Species Management (SLELO PRISM) has developed an Urban Forest Sustainability Initiative (UFSI), and a Pledge to Protect outreach program that can be utilized by communities and community members to protect urban forests and landscape trees. The first half of the presentation will provide an overview of the UFSI and how communities can utilize a guide created for the Initiative to enhance the health of urban forests. The second half will showcase the Pledge to Protect outreach program which is a fun and easy way for community members to protect their urban trees, forested lands, favorite hiking trails, paddle-ways, and garden from the impacts of invasive species. Learn more about the UFSI at [sleloinvasives.org/UrbanForestSustainability](http://sleloinvasives.org/UrbanForestSustainability) and visit [iPledgeToProtect.org](http://iPledgeToProtect.org) to take the pledge and learn of program resources.

Credits available: SAF: 1.0; ISA Certified arborist, Municipal specialist, and BCMA – Management: 1.0

**10:00 – 11:00 a.m.**

**Session J (in Jules Center 6-105)**

**“Preserving and improving City of Utica's Olmstead Designed Parks through partnership with Central New York Conservancy” L.D. Terry Hawkridge, Central NY Conservancy Board Member**

Frederick Olmsted and his son and companies not only designed New York’s Central Park in 1865 but over a 1000 parks, estates, and college campuses across the country, and world. His parks created open spaces and zone for relaxation. Frederick Olmsted had two sons that took over the landscape Architecture business from their father at the turn of the century. In Utica, over 650 acres of 3 parks and a Parkway were created about 100 years ago. As time has passed, these Utica Parks started to fail structurally, trees got old and dangerous, stairways started to crumble, and safety was a concern. A group of people created an organization, The Central New York Conservancy, to address some of these concerns and with the inclusion of the Utica Parks, began to bring back the beauty and safety of the Utica Parks.

Credits available: SAF 1.0; ISA Certified arborist, Municipal specialist, and BCMA – Management: 1.0

## **Closing Session**

**11:15 a.m. – 12:15 p.m.**

***McVean Student Center Theatre – Room 4-111***

**“Status of NYS Municipal Urban Forest Management Program – Preliminary Findings”**

**Rebecca Hargrave**, Associate Professor of Environmental Science and Arboriculture at SUNY Morrisville and Ph.D. student in Forest Resources and Arboriculture at University of Massachusetts Amherst

New York State has hundreds of municipalities that manage urban trees, and each community does it differently. Understanding municipal urban forest programs’ status, services, needs, and intentions can lead to better technical support, education, and funding from state and federal agencies and non-profits. The preliminary results from a 2021 statewide survey investigating New York’s municipal urban forest management programs will be presented.

Credits available: SAF: 1.0; ISA Certified arborist, Municipal specialist, and BCMA – Management: 1.0

## Speaker Bios

*Thank you to all our speakers who make the conference possible by sharing their knowledge with us!*

**Bruce Alexander** has been the Director of Administrative Services at JCC since 2012. He has overseen facilities planning and the operation and maintenance of campus grounds. Bruce has a bachelor's degree in Facilities Management from Brigham Young University and over forty-five years of experience in the field. He is co-chairperson of the JCC EverGREEN Committee for Campus Sustainability.

**Emanuel Carter** is an Associate Professor in the Department of Landscape Architecture and the Director of the (very new) Center for UNESCO Biosphere Reserve Studies at the SUNY College of Environmental Science & Forestry in Syracuse, New York. Born and raised in Philadelphia, he attended Philadelphia public schools then Cornell University where he received a Bachelor's in Government and a Master's in Regional Planning. Professor Carter worked for the Ithaca Department of Planning & Development, the Pennsylvania Bureau of Recreation & Conservation, Chase Architectural Associates (in Syracuse, NY) and the Syracuse Department of Community Development before arriving at SUNY-ESF in 1985. He teaches landscape architectural and urban design studios and lecture courses in city planning and urban design. For 22 years he was the Graduate Programs Coordinator in the Department of Landscape Architecture. He is currently a member of ESF's Honors Program Advisory Committee. He has extensive experience in urban and rural community planning and design in the United States, Spain, Chile, and Canada. He is a member of the Central & Western New York Regional Advisory Committee of The Nature Conservancy, the Steering Committee of the Champlain-Adirondack Biosphere Network (a UNESCO Biosphere Reserve) and the Syracuse Urban Forest Master Plan Steering Committee. He lives in Syracuse with his wife Cynthia Carrington Carter, a recently retired historic preservation consultant.



*Emmanuel Carter*

**Rob Cole** is a Forester with NYSDEC Forest Health and a Certified Arborist. He earned an Associate's and Bachelor's in Forestry from SUNY-ESF and started his career with DEC in 2006. Rob has led a variety of forest pest management projects across the state, with his current focus being white pine decline and long-term silvicultural practices that improve forest health.

**Mike DeMarco** is a City Planner & ISA certified arborist (NY-5840A, TRAQ), Council Board member, and Tree Watertown member, who coordinates urban forestry programming in Watertown, NY, through the City's Planning and Community Development Department.



*Mike DeMarco*

**Normand Genier** is a Tribal Forester with the Saint Regis Mohawk Tribe in Akwesasne, NY. Prior to working with the Tribe, Normand worked over 20 years north of the border in Canada with South Nation and Raisin Region Conservation Authorities, 2 of the 36 watershed-based conservation organizations operating solely in Ontario. He worked as a Forest Technician in the early part of his career, then as a Soil and Water Conservation Specialist, and finally as a Forestry Specialist. After a successful career of helping countless landowners and farmers with land stewardship and non-point source pollution reduction projects, Normand now manages the Tribes forestry resources, currently focusing on survey and mitigation efforts associated with effects of the Emerald Ash Borer (EAB), and also the protection and preservation of the culturally-significant black ash tree species.



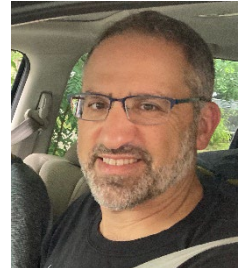
*Normand Genier*

**Rebecca Hargrave** is an Associate Professor in Environmental Sciences at SUNY Morrisville. She teaches courses and field labs on arboriculture, dendrology, forest recreation, tree health, and forest and wildlife sampling. She has urban forestry degrees from Penn State and the University of Minnesota and is currently in a Ph.D. program at UMass Amherst. Rebecca is an ISA Certified Arborist and TRAQ credentialed. Before Morrisville, she was an Extension Educator for Cornell Cooperative Extension of Chenango County where she worked with invasive species, horticulture, forestry, and natural resources. Rebecca lives in Norwich with her husband and two boys.



*Rebecca Hargrave*

**Steve Harris** has been involved in urban and community forestry for over 20 years, working the last 12 years as the city arborist in Syracuse. Steve also worked for 3 years in the nursery industry and 5 years as an urban forestry educator for Cornell Cooperative Extension. Steve holds degrees from SUNY ESF, Paul Smiths, and Ohio State. He is the current president of the NYS Urban Forestry Council.



*Steve Harris*

**Terry Hawkrige** graduated from the University of New Hampshire with an AAS in Plant Science and a BS in Business Administration. He began working for Hamilton College as the College Horticulturalist caring for the Root Glen, a six-acre natural area, then moved to Blueview Nursery, a sixty-acre Landscape nursery in Canton Massachusetts where he performed landscape design, landscape consultations, plant health care and retail sales in the garden center. Terry returned to Hamilton College in 1983 where he managed five Physical Plant departments before retiring in 2013 as Director of the Hamilton Arboretum. While he worked at Hamilton College the campus vastly expanded the diversity of species and varieties of campus trees after Dutch Elm Disease eliminated over a third of the campus trees. After retiring from Hamilton College, Terry established "Rustic Pines", a tree care business while he continues running, doing systemic applications of fungicides, insecticides, and nutrients in the preservation of older trees.



*Terry Hawkrige*

Terry has been a Certified Pesticide Applicator since 1975, and an ISA Certified Arborist since 1981, and recently became qualified as an ISA Tree Risk Assessor. Terry volunteered for Oneida County Cooperative Extension on the Agricultural Board for six years and is currently of the Board of Directors for The Central New York Conservancy since 2014, and on the Executive Board of the NYSUFC. When not at work, Terry enjoys gardening, beagling, and saltwater fishing on Cape Cod. He is married and has three children and 6 grandchildren (five girls) between 12 -7 years old.

**Betsy Henry** leads ReTree Schenectady, an all-volunteer non-profit organization that has planted over 3,000 trees in Schenectady in the past 30 years. She is also a Principal Scientist at Anchor QEA, an environmental engineering firm, and works on the assessment and cleanup of contaminated sites. Betsy has a BS in Agronomy from Colorado State University and a Ph.D. in Engineering Sciences from Harvard University.



*Betsy Henry*

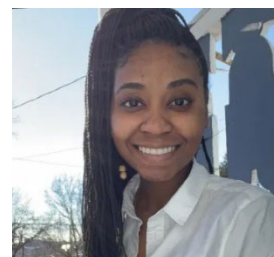


**Angello Johnson** is the Land Resource Technician with Saint Regis Mohawk Tribe. He has been working with the tribe for 8 years having begun with the 4-year Akwesasne Cultural Restoration Program in 2014 which focused on restoring cultural practices through hands on experiences and teaching community members through demonstration. Since then, Angello has transitioned over to the Land Resource Program at a technician level where he works very closely with the local natural resources that include black ash. He am a sixth-generation traditional black ash basket maker and instructor in his spare time. Angello is honored and blessed to hand down the traditional ecological knowledge that goes hand in hand with basket making along with protecting our natural resources for future generations to come.



*Angello Johnson*

**Cimone Jordan** is the Director of Housing and Neighborhood Planning in the Department of Neighborhood and Business Development. In that role, she advances the housing and community development investments made in Syracuse by managing the planning strategy for residential investments and coordinating a variety of property disposition, strategic enforcement, and community engagement initiatives to promote neighborhood stability. Her recent work has included aligning planning efforts between the Resurgent Neighborhood initiative and the city's Urban Forest Master Plan.



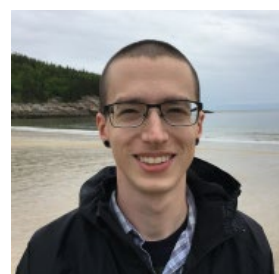
*Cimone Jordan*

**Kat Korba** has over ten years of experience in Urban Forestry and Natural Resource program implementation working for community-based organizations such as Cornell Cooperative Extension of Onondaga County and Onondaga Earth Corps located in Syracuse, NY. Kat currently operates Gardencycle, a design/ build business, focusing on Community Food Forest design & establishment. Kat is passionate to engage the community with environmental stewardship experiences and opportunities that will promote positive social and ecological impacts within the Syracuse community.



*Kat Korba*

**Justin Kwiatkowski** received his Bachelor's in Landscape Architecture from SUNY College of Environmental Science and Forestry before working as an Urban Forestry Educator in the City of Syracuse while managing the Save the Rain tree planting program, which planted approximately 4200 street and park trees. He is also an ISA certified arborist. Upon returning to SUNY College of Environmental Science and Forestry to pursue a Master's of Science in Landscape Architecture, Justin worked in the Center for Cultural Landscape Preservation documenting the landscape histories of the Home of Franklin D. Roosevelt National Historic Site and Flight 93 National Memorial. After completing his thesis, entitled "Biophilic School Sites for the Syracuse City School District" Justin has been working as a Landscape Designer at Michael Grimm Services and Environmental Design and Research.



*Justin Kwiatkowski*

**Ian Leahy** has overseen development of American Forests' award-winning urban forestry program, now called Tree Equity, since 2014. His program focuses on deploying a uniquely comprehensive change model that includes a suite of technical and financial assistance across the spectrum of urban forestry, including such resources as Tree Equity Score, Vibrant Cities Lab and helping develop City Forest Credits. Prior to joining American Forests, Leahy served as the urban and community forestry coordinator for the District of Columbia and ran a landscape business in Michigan's Upper Peninsula. He has studied environmental management at Cornell University and Yale University.



*Ian Leahy*

**Michael A. Lumbis** has been the Planning and Community Development Director for the City of Watertown since 2016, and with the planning and community development department for the past 28 years. He received his Bachelor's in Landscape Architecture from SUNY College of Environmental Science and Forestry in 1993. In 2016, he was promoted to the Director position after serving as an Intern, Assistant Planner and Planner with the department.

Michael has worked on planning initiatives such as the City's first ever Comprehensive Plan and a rewrite of the City Zoning Ordinance. He has been involved with the development and implementation of numerous projects related to downtown revitalization, riverfront development, housing, urban forestry, historic preservation, zoning, and economic development. Michael's urban forestry experience includes the initial development and oversight of the City's urban forestry program for over 20 years, working with City crews and volunteers to complete annual tree planting and tree pruning projects. He has been a member of Tree Watertown, the City's Street Tree Advisory Board, since its founding in 1995. He is a past Chairman of Tree Watertown and currently serves as its Treasurer. As a member of Tree Watertown, he has assisted with the development of various tree planting and educational projects, community forestry workshops, programs for school children, annual Arbor Day activities, the development of the Downtown Arboretum and Tree Watertown's annual fall tree planting project.

**Kenneth A. Mix** has been the City Manager of Watertown, NY since January 2020. He has worked for the City for over 32 years, most of which was in the Planning Office with 25 years as the Planning and Community Development Coordinator. Ken has a Bachelor of Landscape Architecture degree from SUNY College of Environmental Science and Forestry. Early in his career he managed several projects within John C. Thompson Park including re-paving all the walks, restoration of the stonework, and renovation of the zoo. Ken became involved with Friends of Thompson Park during a four-year retirement from government service. He initiated a monthly volunteer day within the park, which led to creation and improvement of trails and removal of invasive Buckthorn and Honeysuckle.

**Justin Murphy** is a reporter for the Democrat and Chronicle newspaper in Rochester and author of the book "Your Children Are Very Greatly in Danger: School Segregation in Rochester, New York." He attended the University of Chicago and S.I. Newhouse School of Public Communications at Syracuse University. His tree canopy project was part of a health data reporting fellowship through the USC Annenberg School of Journalism.



*Justin Murphy*

**Andréa Nieves** is the Invasive Species Education & Outreach Coordinator for NYSDEC Lands & Forests. She has seven years of experience in environmental, outdoor, and museum education. Her career has offered her a variety of interesting experiences, such as working at a zoo in NYC, churning butter in 19th century garb, leading high-ropes courses for middle schoolers, working with a talking crow, and finally, State service.

Andréa always aims to be learning on the job and continues to take on a variety of projects throughout her career. She has skills in informal and inquiry-based education, social media marketing, web development, print product creation, public speaking, and project coordination. She coordinates New York Invasive Species Awareness Week (NYISAW), co-leads the New York Invasive Species Clearinghouse redesign project, and participates on the NAISMA IDEA (Inclusion, Diversity, Equity & Accessibility) committee.



*Andréa Nieves*

**Megan Pistolese-Shaw** holds a Bachelor's of Science Degree focused in Ecology, Environmental Education and Sustainability from Empire State College. She is experienced with aquatic and terrestrial invasive species identification, impacts, modes of introduction, prevention, and management methods. She is the Education and Outreach Coordinator with the St. Lawrence Eastern Lake Ontario Partnership for Regional Invasive Species Management. Through this role, she leads invasive species outreach initiatives and programming throughout the five counties of Oneida, Oswego, Jefferson, Lewis, and St. Lawrence counties.



*Megan Pistolese-Shaw*

**Dr. Donald A. Rakow** is an Associate Professor in the Section of Horticulture, School of Integrative Plant Science at Cornell University. Dr. Rakow served as the Executive Director of Cornell Plantations (now Cornell Botanic Gardens) from 1996 – 2013. He is the co-author with Sharon Lee of 'Public Garden Management' (Wiley & Sons, 2011), and with Ms. Lee and Prof. Meghan Gough of 'Public Gardens and Livable Cities' (Cornell University Press, 2020). Dr. Rakow conducts research and writes on the human benefits of time in nature and directs the Nature Rx@Cornell program. He is also co-author of the text, 'Nature Rx: Improving College Student Mental Health' (Cornell University Press, 2019). He is a past recipient of both the Service Award and Award of Merit from the American Public Gardens Association.



*Dr. Donald Rakow*

**Robert Smith** received his Bachelor of Science and Master of Science from SUNY ESF with a focus in Forest Ecology. As the Terrestrial Restoration & Resiliency Coordinator, he assists a five-county region (Jefferson, Lewis, Oneida, Oswego, and St. Lawrence) with the management of invasive species. In addition, he promotes an urban forest sustainability program that offers communities a guide with strategies to increase resiliency to invasive pests, pathogens, and climate change, a presentation outlining this guide, and up to \$5,000 to a few communities each year to reimburse for the purchase of non-invasive tree species.



*Robert Smith*

**Kym Spaeth** began her career at National Grid in 2008 in Accounts Maintenance and Operations. Following her time in AMO, she worked in the Syracuse Contact Center as a Call Center representative. After a few different departments and a few years, she became a Supervisor for the Low-Income Team. For 7 years, her team assisted our most vulnerable customers within the community. Over the years she has volunteered with National Grid in our communities, supported several Employee Resource Groups and became a Board Member for Junior Achievement. All of this has led to her current role as Senior Program Manager in Project C – Community Engagement and Neighborhood Investment. She has lived in Central New York for 16 years with her husband of nearly 18 years. They have 4 children, one granddaughter and three dogs. Outside of work she spends time with her family.



*Kym Spaeth*

**Phillip Sprague** is a volunteer with the Watertown Rotary and has participated in several tree plantings around the Watertown area.



**Randall Swanson** is the current President of the Village Improvement Society of Saranac Lake and serves as the Parks Chairperson. He is a certified arborist with a consulting business and a professor of forestry at Paul Smith's College where he is the coordinator of the Arboriculture and Landscape Management program. Randall has lived in Saranac Lake for the last 32 years and still has not paddled and fished on all of the Adirondack lakes and ponds in the area. But he's trying!



*Randall Swanson*

**Gloria Van Duyne** is the NYS DEC Urban and Community Forestry (UCF) Program Coordinator. She joined DEC's Division of Lands and Forests in 2005 and began managing the UCF program in 2019. The program includes a robust team of coordination and regional staff who work with communities across NYS to help them develop and grow their own UCF programs. Prior to DEC, Gloria was the Executive Director of the Landis Arboretum in Esperance, NY. She has a Master's in Natural Resource Management and Nonprofit Administration from Antioch New England.



*Gloria Van Duyne*

**Dr. Jason White** is a North Country native and an active member of Tree Watertown since 2004. He graduated from Watertown High School, Cornell University and Upstate College of Medicine (Syracuse) and returned to Watertown after his residency training in 2004. He was an officer for Tree Watertown, emcee at Arbor Day celebrations and has taken special interest in improving the Downtown Arboretum. He has been Chairman of Advantage Watertown (the Citizens Advisory Council) since 2016.

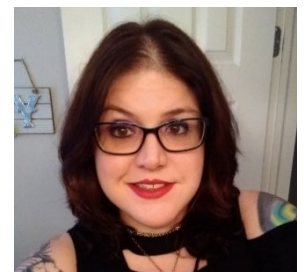


*Jason White*

Dr. White's interest in local history started with gathering stories from family and friends and grew into extensive research and community engagement. He facilitates History Day for the Jefferson Leadership Institute Program and was the Keynote Speaker for the Black Rose Campaign of the Jefferson County Historic Society. Dr. White's interviews were featured in the PBS Documentary "Discovering Watertown", he served as a co-guide for "History and Haunting Walks" in Downtown Watertown and a presenter for the Annual Brookside Cemetery Tours. He continues as a member of the medical staff at Samaritan Medical Center and serves as the Chair of the Division of Family Medicine. Additionally, he is Chairman of the Jefferson Physician Organization and serves on the board of the North Country Initiative. Dr. White prides himself on caring for patients and the community itself. He lives in Watertown with his wife Michele and two children Madison and Michael.

## Conference Coordinator

**Christina McLaughlin** is the NYS DEC Urban and Community Forestry (UCF) Partnership Coordinator as which she oversees the ReLeaf program and coordinates the annual conference. She started with DEC in 2016 as an environmental educator and joined the UCF program in May 2019 jumping right into that year's conference. Prior to joining DEC Christina was the Education and Outreach Coordinator for Huyck Preserve and Biological Research Station in Rensselaerville NY for 4 years. She has a Master's in Biodiversity Conservation and Policy from University at Albany and did her thesis on public knowledge of invasive species.



*Christina McLaughlin*

## Conference Ads

Please be sure to visit our sponsors and exhibitors in the Commons areas of Jules Center!



### GROWERS OF MISSOURI GRAVEL BED

Bare Root Trees

**GROWING SUPERIOR TREES FOR  
THOSE TOUGH URBAN CONDITIONS**

Find us at: [WWW.RAREEARTHNUSSERY.NET](http://WWW.RAREEARTHNUSSERY.NET)

Email: [RareEarthNursery@gmail.com](mailto:RareEarthNursery@gmail.com)

Call/Text 315-440-5871

DAVID AND JEANNE RYAN

**NYSA Fall  
Conference  
& Expo**

DoubleTree by Hilton Hotel  
Syracuse, NY | **September 18–19, 2022**

Thanks to Little Trees car  
air fresheners for  
donating to the  
conference attendee gift  
bags!



# GreenWell™

Greenwell is an ingenious Australian water saving invention, fast gaining favor in North America over traditional tree watering bags. Greenwell is manufactured in Ohio out of recycled materials. Greenwells themselves can be reused on multiple installations. Experts agree that effective tree watering in the establishment phase is critical to a plant's survival. By eliminating water runoff and evaporation through fast deep penetration Greenwell saves water and makes the most of every watering cycle.



**Contact information for samples and pricing please call or**  
Email: sean@millerkeats.com  
Tel: Ken Stuursma (440) 321 7913 cell

**Website for more information**  
[www.greenwellwatersavers.com](http://www.greenwellwatersavers.com)

## PRODUCT FEATURES...

- ✓ Zip join enables easy placement around new or existing trees
- ✓ Protects the tree from powered garden equipment
- ✓ Holds mulch and fertilizer in place
- ✓ Keeps grass from growing over the tree base
- ✓ 10 year lifespan can be removed after 2-3 years or once the tree is established
- ✓ Made in USA from recycled UV plastic and can be reused multiple times. 

## SIZES

- 17" diameter - base capacity 7 Gallons
- 26" diameter - base capacity 13 Gallons



[www.treeddiaper.com](http://www.treeddiaper.com)  
[info@treeddiaper.com](mailto:info@treeddiaper.com)  
540-300-1465

## Field Proven Since 2013

- ◇ **Protect Trees Against Droughts in all seasons, winter included!**
- ☒ catch & slowly release rain/snow water
- ☒ stabilize Soil Moisture in all soil types
- ☒ greatly boost Field Capacity & Plant Available Water
- ☒ promote healthy outward root growth
- ◇ **Mitigate Salt Damage**
- ◇ **Prevent Vandalism w/ Mulching**

**Bulk Packaging?**  
**Volume Discounts?**  
**Gov/NonProfit Discount?**  
**Contact Us**

# Fall ReLeaf Events

Join us for an upcoming webinar or workshop.

Register for these events on the Urban Forestry Program's Activity Page: <https://www.dec.ny.gov/lands/30859.html>

## September 13 – Noon

### **How to Talk About Trees (and How Not To) (virtual)**

Join us for this presentation by Dr. Paul Ries of Insightful Nature LLC. Paul has more than 35 years of experience in urban forestry including as a state urban forestry program manager and professor at Oregon State College, a former president of International Society of Arboriculture (ISA), and a developer of curricula for the Municipal Forestry Institute (MFI).

## September 30 – 9:30 a.m.

### **Assisted Migration & Invasive Trees in Urban Forestry (Workshop)**

Location: SUNY Morrisville Arboretum

This workshop will focus on locally invasive trees and the impacts of assisted tree & shrub migration related to climate change with Professor Rebecca Hargrave. Registration coming soon!

## Be in the know!

Be the first to hear about upcoming events, join the DEC Monthly newsletter "Plants Trees and Land Conservation": [https://public.govdelivery.com/accounts/NYSDEC/subscriber/new?topic\\_id=NYSDEC\\_22](https://public.govdelivery.com/accounts/NYSDEC/subscriber/new?topic_id=NYSDEC_22)

Sign up for the NYS Urban Forestry Council's monthly newsletter "Taking Root" by clicking the subscribe link on the right hand side: [www.nysufc.org](http://www.nysufc.org)

# See you in 2023 in Long Island!